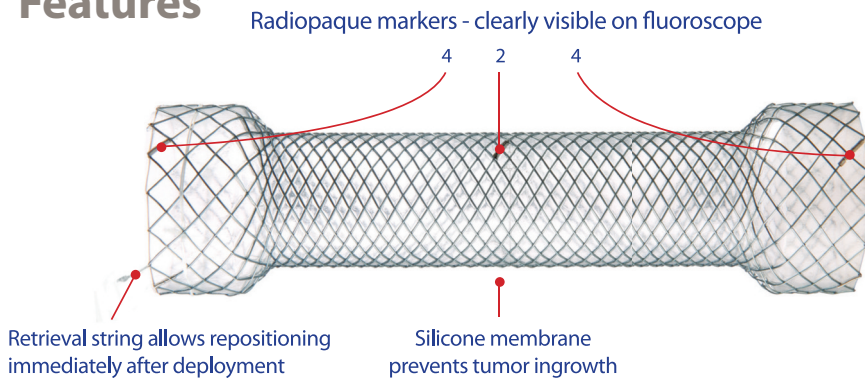


Through the Scope (TTS) Esophageal Stent



- Preloaded in a 3.47mm (10.5Fr) delivery system
- Allows easy and simple deployment through the channel, under direct visualization
- The best solution for tight, narrow or tortuous anatomy

Features



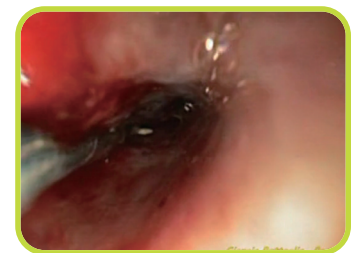
Ordering Information

Easy and Simple Stenting Through the Scope Channel

Esophageal Fully Covered Stent						
Part No.	Stent Diameter (A)	Stent Flange Diameter (B)	Overall Stent Length (C)	Functional Stent Length (D)	Introducer System	
					Diameter (3.47mm)	Usable Length
G-EST1806F	18 mm	26 mm	60 mm	30 mm	10.5 Fr	180 cm
G-EST1808F	18 mm	26 mm	80 mm	50 mm	10.5 Fr	180 cm
G-EST1810F	18 mm	26 mm	100 mm	70 mm	10.5 Fr	180 cm
G-EST1812F	18 mm	26 mm	120 mm	90 mm	10.5 Fr	180 cm
G-EST1814F	18 mm	26 mm	140 mm	110 mm	10.5 Fr	180 cm
G-EST1815F	18 mm	26 mm	150 mm	120 mm	10.5 Fr	180 cm
G-EST2006F	20 mm	26 mm	60 mm	30 mm	10.5 Fr	180 cm
G-EST2008F	20 mm	26 mm	80 mm	50 mm	10.5 Fr	180 cm
G-EST2010F	20 mm	26 mm	100 mm	70 mm	10.5 Fr	180 cm
G-EST2012F	20 mm	26 mm	120 mm	90 mm	10.5 Fr	180 cm
G-EST2014F	20 mm	26 mm	140 mm	110 mm	10.5 Fr	180 cm
G-EST2015F	20 mm	26 mm	150 mm	120 mm	10.5 Fr	180 cm



Tight and narrow stricture



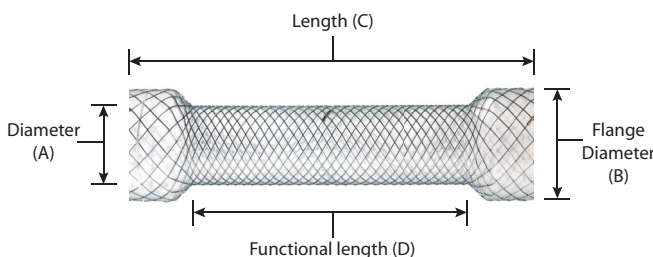
TTS Esophageal stent passing through the narrow stricture

► Dr. Giorgio Battaglia, Italy

Esophageal Partially Covered Stent						
Part No.	Stent Diameter (A)	Stent Flange Diameter (B)	Overall Stent Length (C)	Functional Stent Length (D)	Introducer System	
					Diameter (3.47mm)	Usable Length
G-EST1806B	18 mm	26 mm	60 mm	30 mm	10.5 Fr	180 cm
G-EST1808B	18 mm	26 mm	80 mm	50 mm	10.5 Fr	180 cm
G-EST1810B	18 mm	26 mm	100 mm	70 mm	10.5 Fr	180 cm
G-EST1812B	18 mm	26 mm	120 mm	90 mm	10.5 Fr	180 cm
G-EST1814B	18 mm	26 mm	140 mm	110 mm	10.5 Fr	180 cm
G-EST1815B	18 mm	26 mm	150 mm	120 mm	10.5 Fr	180 cm
G-EST2006B	20 mm	26 mm	60 mm	30 mm	10.5 Fr	180 cm
G-EST2008B	20 mm	26 mm	80 mm	50 mm	10.5 Fr	180 cm
G-EST2010B	20 mm	26 mm	100 mm	70 mm	10.5 Fr	180 cm
G-EST2012B	20 mm	26 mm	120 mm	90 mm	10.5 Fr	180 cm
G-EST2014B	20 mm	26 mm	140 mm	110 mm	10.5 Fr	180 cm
G-EST2015B	20 mm	26 mm	150 mm	120 mm	10.5 Fr	180 cm

Clinical Reference

Sung Jun Choi, Jin Hong Kim MD. **Fully covered, retrievable self-expanding metal stents (Niti-S) in palliation of malignant dysphagia: Long-term results of a prospective study.** *Scandinavian Journal of Gastroenterology*, 2011; 46: 875-880



An ISO 13485 Registered Company

200 Grandview Avenue
Camp Hill, PA 17011
Toll Free: 800.451.5797
Fax: 717.761.0216
Email: info@gi-supply.com
Web: gi-supply.com